

Kelsey Bench Vineyard Estate Kelseyville, CA



OFFERING MEMORANDUM

PRICE ~ \$685,000



NORCALVINEYARDS

A Division of Remax Full Spectrum

Specializing in Sales and Acquisitions of Vineyards, Wineries and Fine Estates

www.norcalvineyards.com

Kelsey Bench Vineyard Estate Kelseyville, CA

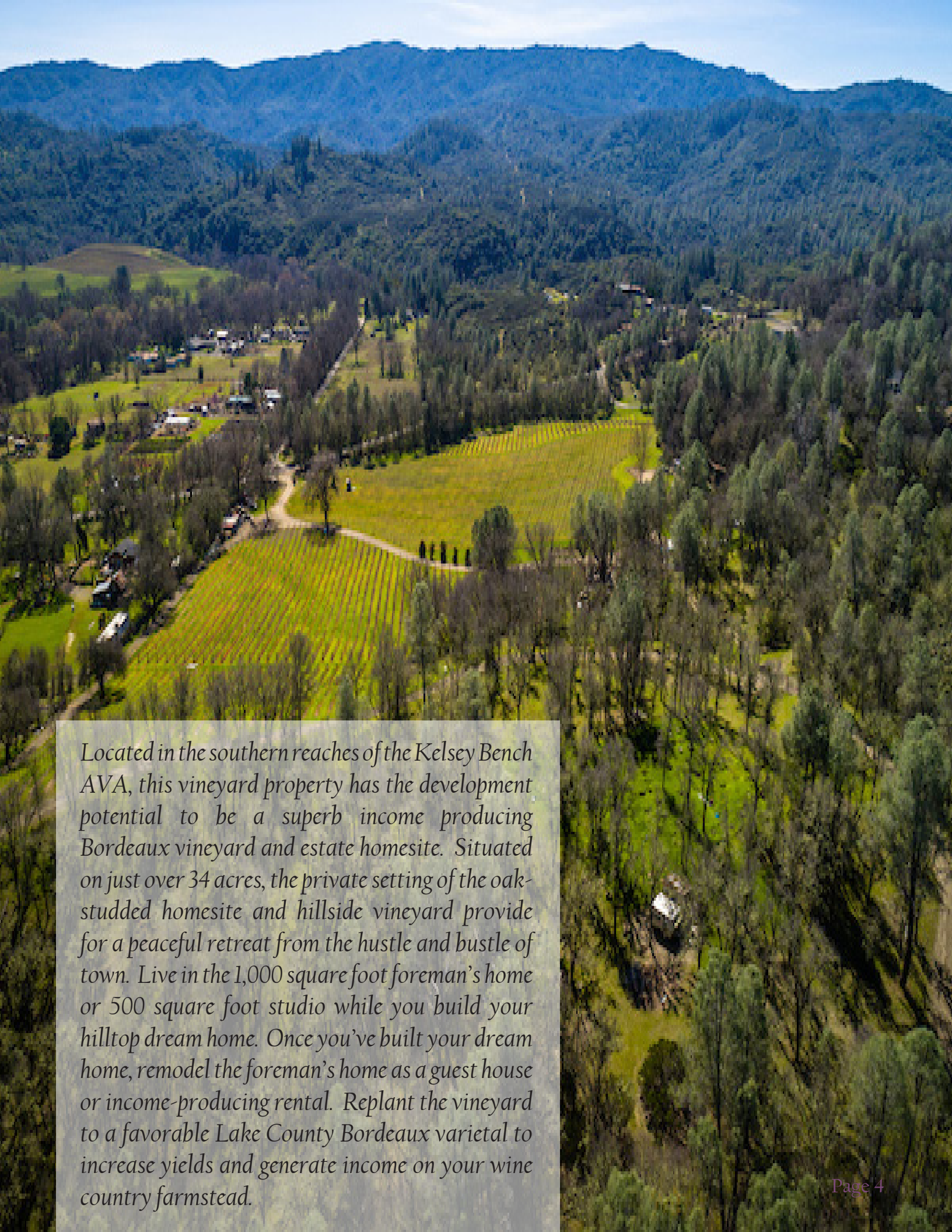
TABLE OF CONTENTS

Salient Facts	3
Property Overview	4
Photo Gallery	5
Aerial Map	6
County Overview	7



Salient Facts

LOCATION	10095 Kelsey Creek Drive, Kelseyville, CA 95451
APN	011-064-05-00
COUNTY	Lake
ACREAGE	34.42+/-
VINEYARD INFO	Approximately 9.63+/- of vineyard producing 9-15 tons per year. Replanting the vineyard to favorable clonal selection and rootstock could increase yields to 50-60 tons per year.
VARIETALS	The majority of the vineyard is planted to Zinfandel, with one small block planted to Petite Syrah and another planted to Cabernet Franc.
WATER	On-site well producing approximately 140 GPM; storage tanks with filtration system used to supply water to the home and irrigate the vineyard. A state licensed ag reservoir with a 9.9 acre-foot water diversion permit is used to frost protect the vineyard.
INFRASTRUCTURE	1,000 square foot foreman's house on site needing extensive remodel or tear down, 500 square foot studio, additional 3-4 bedroom (seller to verify) permitted septic is already installed for a yet-to-be-constructed hilltop estate home. Stay in the foreman's home or studio while you build your vineyard estate.
ZONING	RL

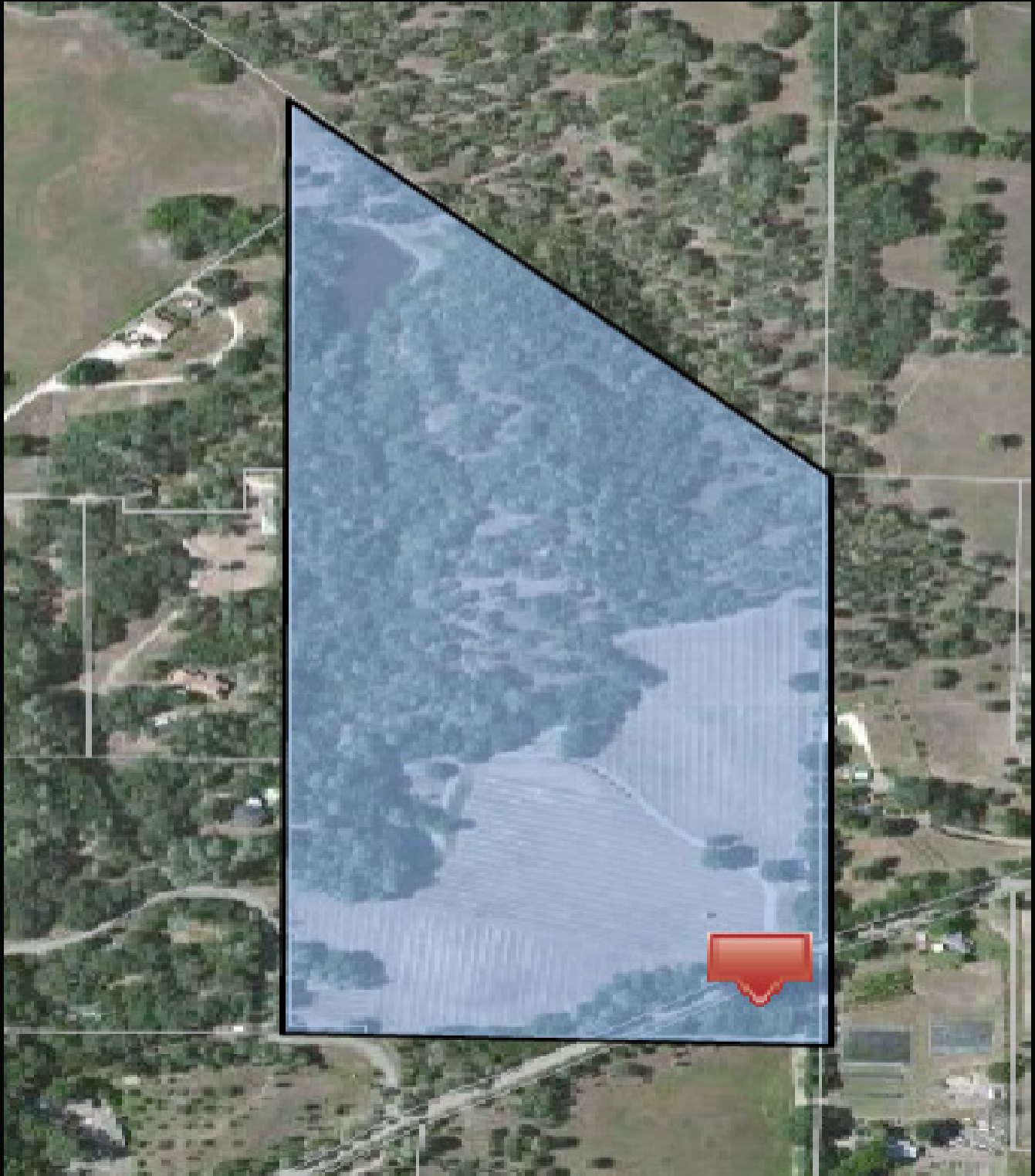


Located in the southern reaches of the Kelsey Bench AVA, this vineyard property has the development potential to be a superb income producing Bordeaux vineyard and estate homesite. Situated on just over 34 acres, the private setting of the oak-studded homesite and hillside vineyard provide for a peaceful retreat from the hustle and bustle of town. Live in the 1,000 square foot foreman's home or 500 square foot studio while you build your hilltop dream home. Once you've built your dream home, remodel the foreman's home as a guest house or income-producing rental. Replant the vineyard to a favorable Lake County Bordeaux varietal to increase yields and generate income on your wine country farmstead.

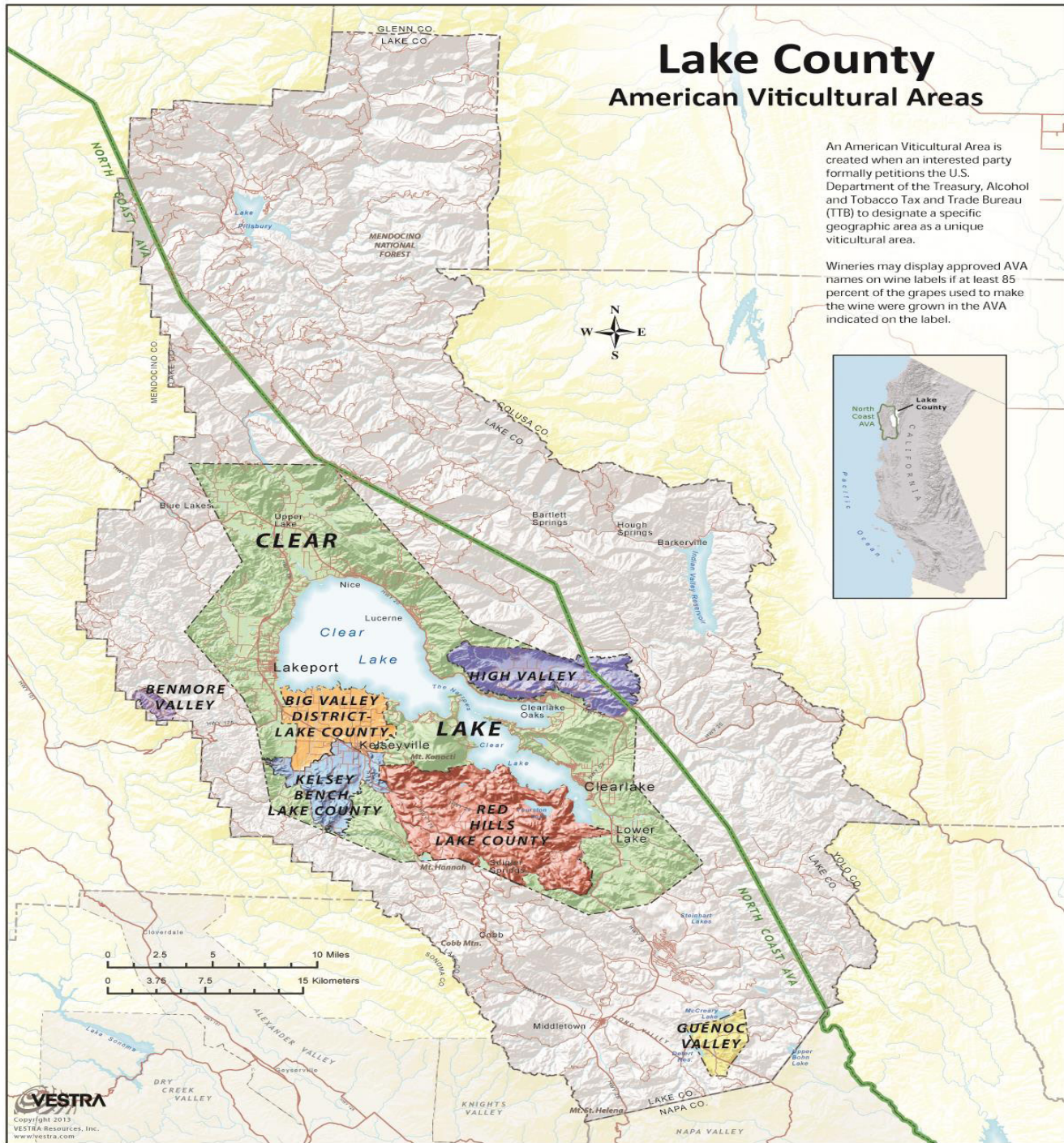
Photo Gallery



Aerial Map



County Overview





NORCALVINEYARDS

A Division of Remax Full Spectrum



Tom Larson

CalBRE # 01057428
President / Broker
Cellular: 707.433.8000
tom@norcalvineyards.com

Tony Ford

CalBRE # 01406167
Wine Enthusiast / Sales
Cellular: 707.391.5950
tony@norcalvineyards.com

www.norcalvineyards.com

1303 College Avenue, Santa Rosa, CA 95404
601 South State Street, Ukiah, CA 95482
338 Healdsburg Avenue, Healdsburg, CA 95448

*This information herein believed reliable but not guaranteed.
Each Office Independently Owned and Operated.*

