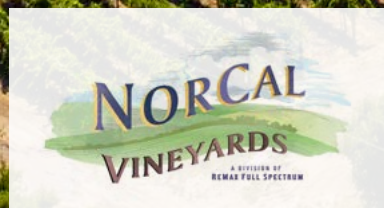


Clearwater Ranch

Big Valley AVA - Finley, CA

Offering Memorandum
Price \$450,000



www.norcalvineyards.com

Clearwater Ranch

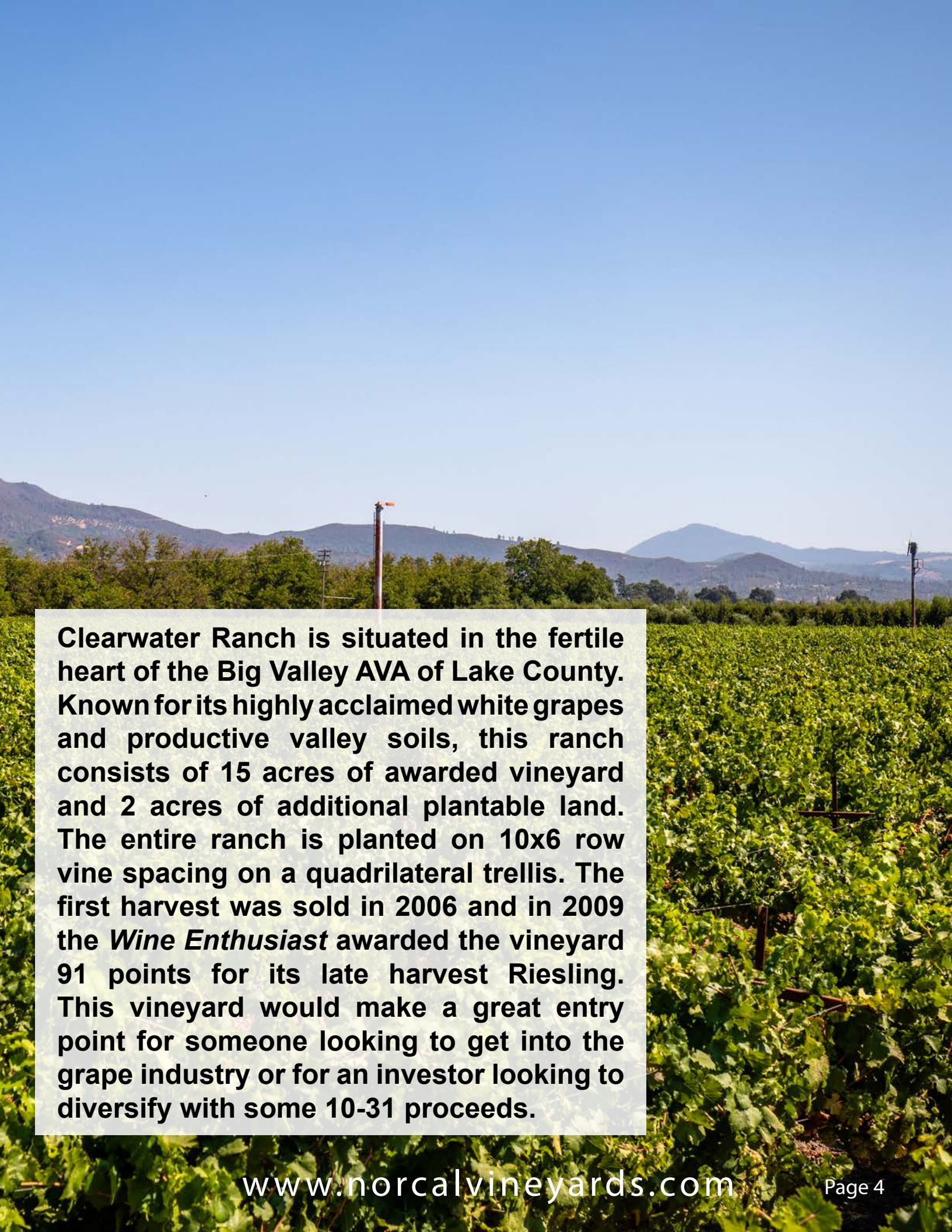
TABLE OF CONTENTS

| | |
|-------------------------|---|
| Salient Facts | 3 |
| Property Overview | 4 |
| Photo Gallery | 5 |
| Vineyard..... | 6 |
| Aerial..... | 7 |
| County Overview..... | 8 |



Salient Facts

| | |
|--------------------|---|
| Address | 3215 Finley East Road Finley, CA 95451 |
| Parcel Size | 19.79 acres |
| AVA | Big Valley |
| County | Lake |
| AP# | 008-026-15-00 |
| Water | Productive Agricultural well on site 65+/- GPM |
| Zoning | AG |
| Tax Status | Standard Lake County tax rate of approx 1.125% of assessed value |
| Price | \$450,000 |



Clearwater Ranch is situated in the fertile heart of the Big Valley AVA of Lake County. Known for its highly acclaimed white grapes and productive valley soils, this ranch consists of 15 acres of awarded vineyard and 2 acres of additional plantable land. The entire ranch is planted on 10x6 row vine spacing on a quadrilateral trellis. The first harvest was sold in 2006 and in 2009 the *Wine Enthusiast* awarded the vineyard 91 points for its late harvest Riesling. This vineyard would make a great entry point for someone looking to get into the grape industry or for an investor looking to diversify with some 10-31 proceeds.

Photo Gallery



Vineyard

AVA

Big Valley

Vineyard

**5 acres of Pinot Gris
5 acres of White Riesling
5 acres of Riesling**

Planted

2002-2003

Row Spacing

6x10

Trellis

Quad

Irrigation

Drip

Plantable Land

**Approx 2+/- acres of
additional plantable land**

Water

**Productive Agricultural
well on site - 65 GPM**

Frost Protection

Wind Machine and Drip

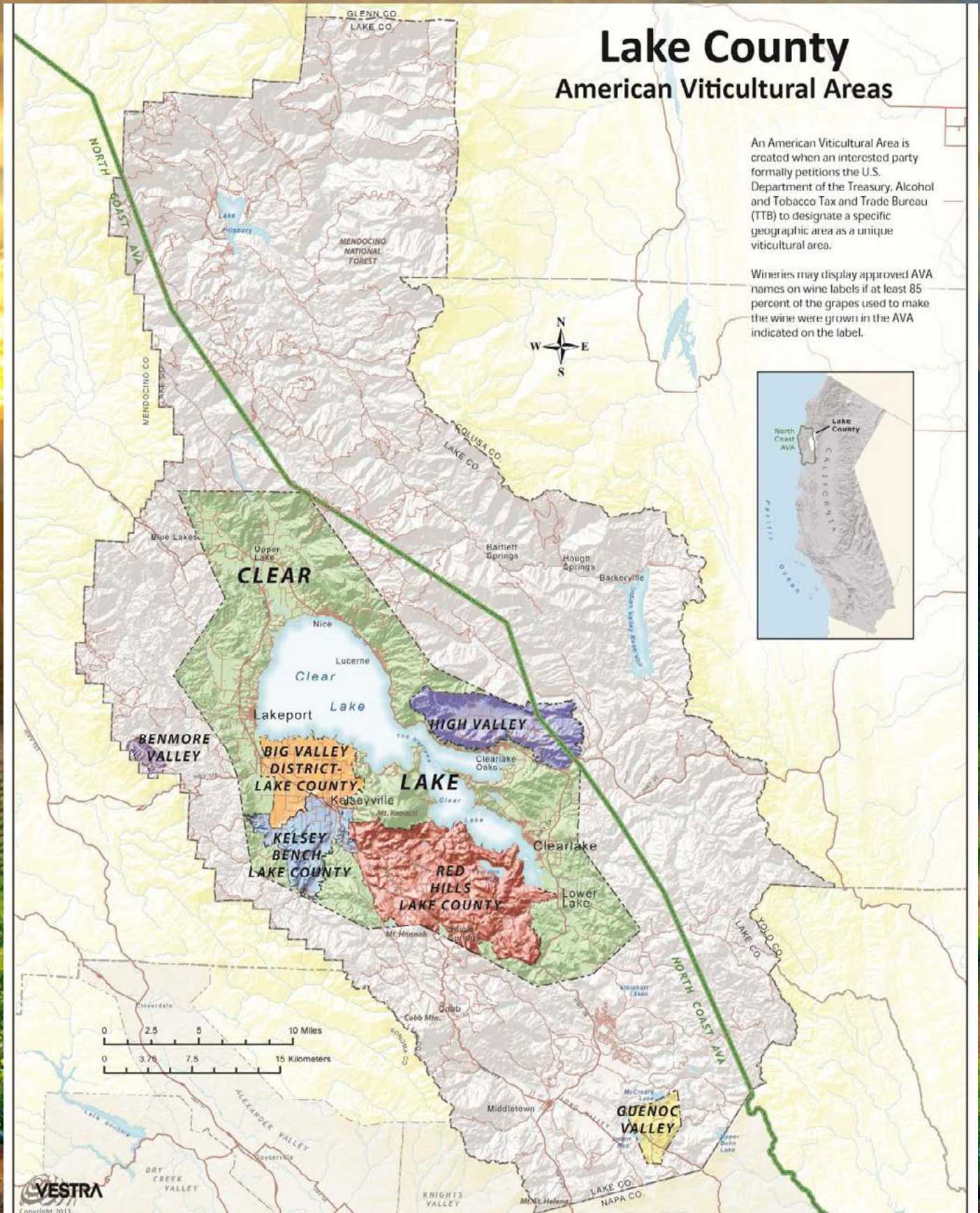
2017 Harvest

**White Riesling: 31.45 tons
Late Riesling: 8.88 tons
Pinot Gris: 6.16 tons**

Aerial Map



County Overview





Tom Larson

CalBRE # 01057428
President / Broker
Cellular: 707.433.8000
tom@norcalvineyards.com

Tony Ford

CalBRE # 01406167
Wine Enthusiast / Sales
Cellular: 707.391.5950
tony@norcalvineyards.com

www.norcalvineyards.com

737 4th Street, Santa Rosa, CA 95404
601 South State Street, Ukiah, CA 95482
338 Healdsburg Avenue, Healdsburg, CA 95448

*This information herein believed reliable but not guaranteed.
Each Office Independently Owned and Operated.*